

Proposed site Plan

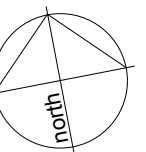
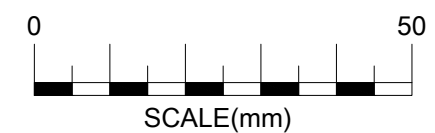
Scale nts

PRE - SALES

INDEPENDENT LIVING UNITS

SOUTH EASTERN COMMUNITY CARE
12 SOMERVILLE STREET, SORELL 7172

Scale NTS
MAY 2019



PS 01
1702

KAREN DAVIS
ARCHITECT

KAREN DAVIS ACCREDITATION # CC141Q
PO BOX 942 PH: 0417 036642
SANDY BAY 7006
3/30 FIELDING DRIVE
West Hobart TASMANIA 7000